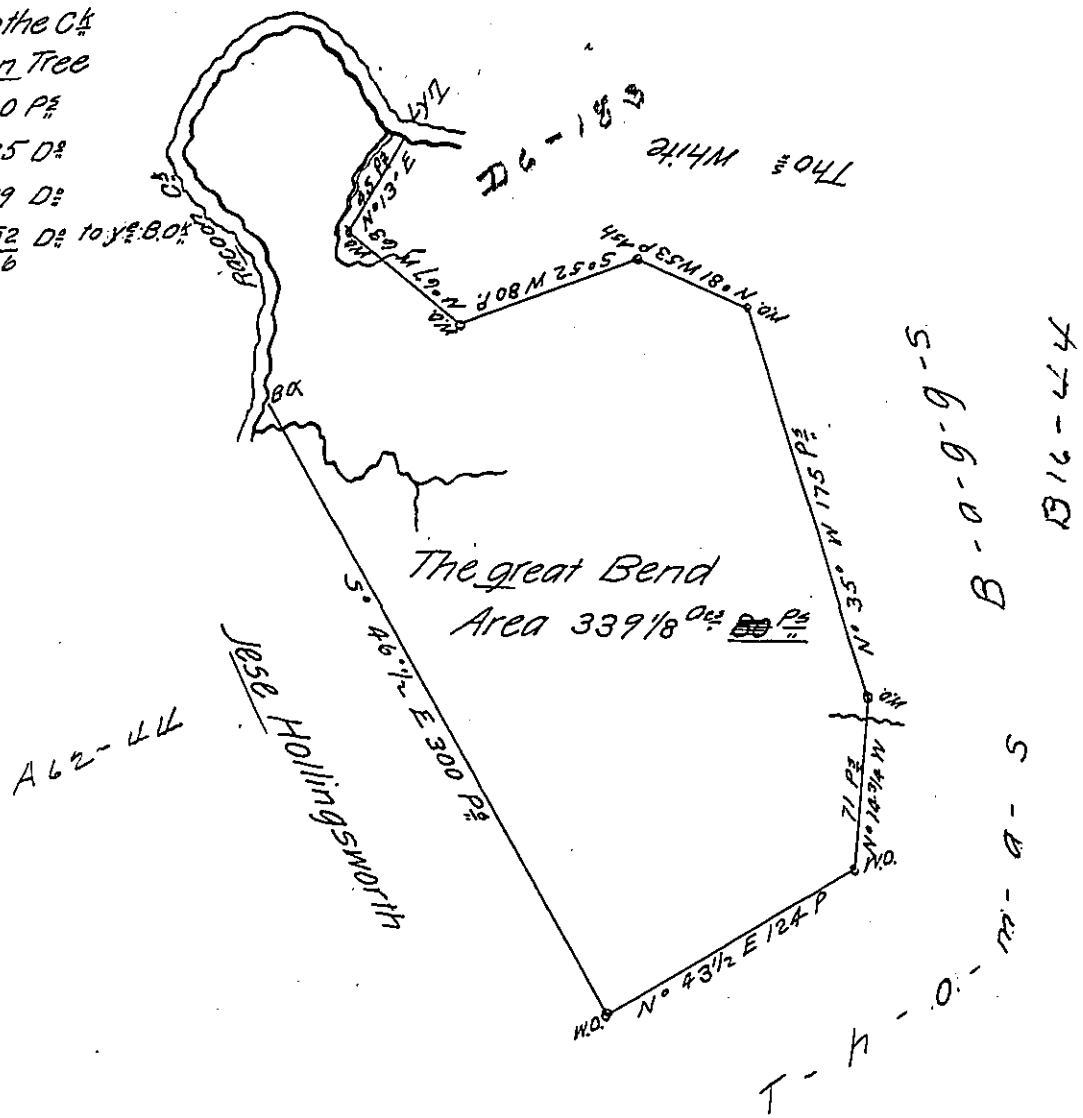


C & Dist^{ce} up the Ck
 from the Lyn Tree
 N° 54° W 60 P²
 S° 37° W 75 D²
 S° 54° E 79 D²
 S° 9° E 52 D² 10 y² B.O.
 266



A Draught of a Survey call'd "The great Bend" Lying on Raccoon Ck in Washington County cont^g
 339 Ac² (obv) P² ~~with~~ with the usual Allow^{ce} executed Feb 1st 1786 in Pursuance of a Warrant for
 300 Ac² in the Name of Jonah Seaman dated Jan^y ye 9th 1786.

Jn^o Lukens Esq^r S Gen^l

Mat^h Ritchie }
 Presley Nevill } D. Surf

IN TESTIMONY that the above is a copy of the original remaining on file in
 the Department of Internal Affairs of Pennsylvania, made
 conformably to an Act of Assembly approved the 16th day of
 February, 1833, I have hereunto set my Hand and caused
 the Seal of said Department to be affixed at Harrisburg,
 this second day of October 1906

Leach P. Brown
 Secretary of Internal Affairs.